

Press release

Easy to build in, ready for Bluetooth Mesh (SIG): the new SENSOTEC NET generation. Our most innovative sensors network wirelessly via a Bluetooth Mesh network, can be configured via an app, control LED drivers via the DALI bus and are also supplied with energy by the DALI bus. Simple, flexible, quick to install.

New, smart sensors for recessed and surface-mounted installation - SENSOTEC makes your luminaire fit for the future. The sensor modules are designed as DALI-2 application controllers and can be connected directly to the DALI bus with just two cables. All sensors can be configured via Bluetooth and are networked via a Bluetooth mesh network. The sensors can of course also be used in all other sectors - from the lighting, sanitary, HVAC and other industries.

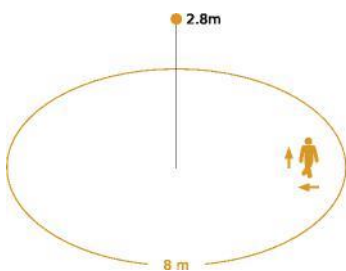
The advantages:

- Wireless networking without modifications to existing wiring (e.g. for retrofit applications, old luminaires out - new ones in), i.e. retrofitting possible without modifications to existing installations
- Small designs for optimum integration in narrow luminaires
- Power supply via the DALI bus requires no additional control gear in the luminaires
- High-frequency technology allows the sensors to be optically concealed and offers high IP protection or van dalen protection
- Proven STEINEL sensor technology integrated.
- The sensors are commissioned and configured using the Bluetooth Mesh app
- Free definition of luminaire groups with configurable behavior
- Wireless firmware updates for the entire network

HF2 NET



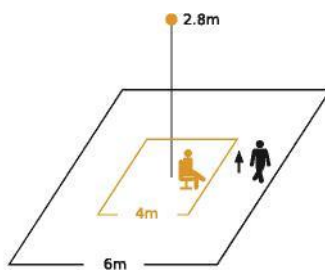
The HF2 NET is a Radar sensor module designed for built-in applications. Detection takes place through glass and non-metallic materials so that the modules can be used inside luminaires or other applications without any problems.



PIR NET



Small. Flat. Compact. Inconspicuous presence detector. 360° passive infrared sensor IR with a presence range of 4 x 4m (presence and radial) or 6 x 6m (tangential). With patented multi-segment pyrosensor lens.



Extension NET



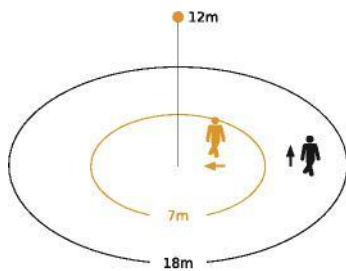
The Extension NET is intended for a luminaire without sensors and is used to extend the Bluetooth Mesh network.

Two types, three connection variants - Our highbay sensors with installation heights of up to 14 meters are available as HB PIR 3360 and HB PIR 345. They differ in their detection range and are each available in three connection variants: Intra, Zhaga and Wire. They are ideal for office, commercial, public buildings, industry and logistics applications (room heights from 2 to 14 meters).

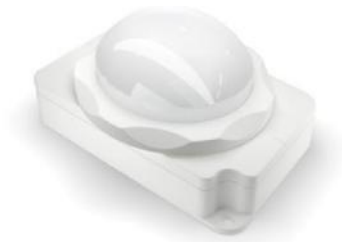
HB PIR 3360 NET



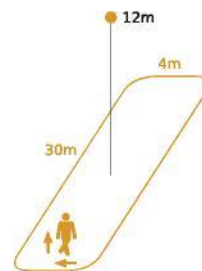
Free from giddiness. Long reach. Highly precise 360° infrared sensor. For monitoring of up to 1000 sqm. Detection range Ø 18m.



HB PIR 345 NET



Monitoring at the highest level. Infrared motion detector for indoor use. Detection area 30 x 4m.



Both sensors are available in an intra version for luminaire installation, as well as with a Zhaga base or as a wire version for luminaire installation.

Intra



Wire



Zhaga



Technical details

	HF2 NET	PIR NET	Extension NET
Type	9017	9018	9020
Dimensions	52 × 40.5 × 29.2mm	66.4 × 20.4 × 18.5mm	47 × 29 × 20mm
	Snap-in distance 61mm	Hole spacing 35mm	Hole spacing 55mm
	3D data available on request	3D data available on request	3D data available on request
Equipment	Motion sensor	Motion sensor	-
	Light sensor	Light sensor	-
	Feedback display	Feedback display	Feedback display
	Parameterization interface	Parameterization interface	Parameterization interface
Sensor technology	High-frequency technology Rod antenna	Passive infrared technology	-
Transmission power	1-2mW	-	-
Transmission frequency	5.8GHz	-	-
Light measurement range	2 - 2000lx	2 - 2000lx	2 - 2000lx
Angle of coverage	360° with 160° opening angle		
Mounting height	2.5 – 3.5m	2.0 – 5.0 m	
Optimum mounting height	2.8m	2.8m	
Radial range	8m (50m ²)	4 x 4m (16m ²)	
Tangential range	8m (50m ²)	6 x 6m (36m ²)	
Connection	0.34 – 0.75mm ²	0.34 – 0.75mm ²	0.34 – 0.75mm ²
Protection class	IP20	IP20	IP20
Temperature range	-20 to +60°C	-25 to +55°C	-25 to +60°C
Interfaces	DALI, Bluetooth	DALI, Bluetooth	DALI, Bluetooth
Conformity	CE	CE	CE
Standards	EN 61347-1	EN 61347-1	EN 61347-1
	EN 61347-2-11	EN 61347-2-11	EN 61347-2-11
	EN 55015	EN 55015	EN 55015
	EN 61547	EN 61547	EN 61547
	EN 301 489-1 EN 300 440	EN 301 489-1	EN 301 489-1

Highbay Sensors

	HB PIR 345 NET Intra	HB PIR 345 NET Wire	HB PIR 345 NET Zhaga
Type	9015	9024	9023
Dimensions	91.5 × 63.3 × 49mm 3D data available on request	91.5 × 63.3 × 49mm Connecting wires 250mm (L) 3D data available on request	91.5 × 63.3 × 57mm 3D data available on request
Equipment	Motion sensor Light sensor Feedback display Parameterization interface	Motion sensor Light sensor Feedback display Parameterization interface	Motion sensor Light sensor Feedback display Parameterization interface
Sensor technology	High-frequency technology	Passive infrared technology	Passive infrared technology
Transmission power	-	-	-
Transmission frequency	-	-	-
Light measurement range	2 - 2000lx	2 - 2000lx	2 - 2000lx
Mounting height	4 - 14m	4 - 14m	4 - 14m
Optimum mounting height	12m	12m	12m
Radial reach	30 x 4m (120m ²)	30 x 4m (120m ²)	30 x 4m (120m ²)
Tangential reach	30 x 4m (120m ²)	30 x 4m (120m ²)	30 x 4m (120m ²)
Connection	0.34 - 0.75mm ²	stranded wires	Zhaga
Protection class	IP20 / IP65* *Sealed lens	IP65	IP65
Temperature range	-20 to +50°C	-20 to +50°C	-20 to +50°C
Interfaces	DALI, Bluetooth	DALI, Bluetooth	DALI, Bluetooth
Conformity	CE	CE	CE
Standards	EN 613347-1 EN 61347-2-11 EN 55015 EN 61547 EN 301 489-1	EN 613347-1 EN 61347-2-11 EN 55015 EN 61547 EN 301 489-1	EN 613347-1 EN 61347-2-11 EN 55015 EN 61547 EN 301 489-1

	HB PIR 3360 NET Intra	HB PIR 3360 NET Wire	HB PIR 3360 NET Zhaga
Type	9016	9022	9021
Dimensions	91.5 × 63.3 × 49mm	91.5 × 63.3 × 49mm Connecting wires 250mm (L) 3D data available on request	91.5 × 63.3 × 57mm 3D data available on request
Equipment	Motion sensor Light sensor Feedback display Parameterization interface	Motion sensor Light sensor Feedback display Parameterization interface	Motion sensor Light sensor Feedback display Parameterization interface
Sensor technology	High-frequency technology	Passive infrared technology	High-frequency technology
Transmission power	-	-	-
Transmission frequency	-	-	-
Light measurement range	2 - 2000lx	2 - 2000lx	2 - 2000lx
Mounting height	4 - 14m	4 - 14m	4 - 14m
Optimum mounting height	12m	12m	12m
Radial reach	7m (38m ²)	7m (38m ²)	7m (38m ²)
Tangential reach	18m (254m ²)	18m (254m ²)	18m (254m ²)
Connection	0.34 - 0.75mm ²	stranded wires	Zhaga
Protection class	IP20 / IP65* *Sealed lens	IP65	IP65
Temperature range	-20 to +50°C	20 to +50°C	20 to +50°C
Interfaces	DALI, Bluetooth	DALI, Bluetooth	DALI, Bluetooth
Conformity	CE	CE	CE
Standards	EN 61347-1 EN 61347-2-11 EN 55015 EN 61547 EN 301 489-1	EN 61347-1 EN 61347-2-11 EN 55015 EN 61547 EN 301 489-1	EN 61347-1 EN 61347-2-11 EN 55015 EN 61547 EN 301 489-1
Status: January 2021 (subject to change)			

Outlook for Dialog Days 2021



At the STEINEL Dialog Days 2021, we will present the new SENSOTEC NET generation in a web seminar, the advantages and areas of application and show you SENSOTEC in use. At the end of the web seminar, we will answer your specific questions.

[Further information and registration](#)

Company portrait

As an OEM partner with 120 employees in Switzerland, STEINEL Solutions AG provides its customers with a service package comprising consulting, product development, industrialization, manufacturing and services from the idea to the finished product - in the spirit of a one-stop store. With sensor technology, communication, low power management and approval management as expertise in the field of development, the company develops customer-specific product applications and tailor-made solutions and counts both well-known market leaders and numerous hidden champions among its customers. Thanks to its affiliation with the STEINEL Group, STEINEL Solutions has access to a Europe-wide network. Depending on the product life cycle and market success, it is therefore possible to scale quickly and adequately and expand the series assembly of large-volume products to other locations.

With the SENSOTEC portfolio from STEINEL Solutions AG, luminaire and product manufacturers now have a flexible and easy-to-install solution for equipping products with smart and precise sensor intelligence without having to compromise on design.



**Do you have any questions about our SENSOTEC portfolio?
Our experts will be happy to help you!**

Andrea Lachner
OEM sales and expert in SENSOTEC

T + 41 (0) 55 418 23 99

sensotec@steinel.ch

www.steinel.ch